

Epithelial Tissues

Histology is the branch of anatomy that _____

What is a tissue?

- ❖ A _____ function
- ❖ Example: cardiac, muscle, or nerves

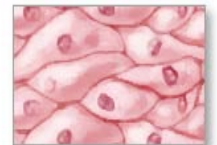
4 Types of Tissues

- ❖ _____ Tissue - covers body surfaces and organs, lines body cavities
- ❖ _____ Tissue - binds and supports body parts
- ❖ _____ Tissue - contracts producing movement
- ❖ _____ Tissue - responds to stimuli and transmits nerve impulses

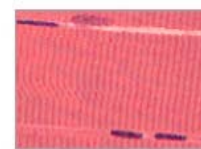
Four types of tissue



Connective tissue



Epithelial tissue



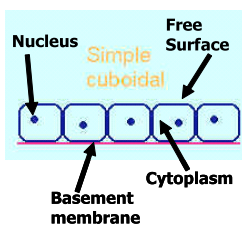
Muscle tissue



Nervous tissue

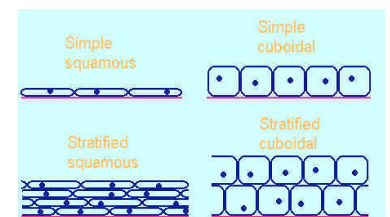
Epithelial Tissue

- ❖ _____
- ❖ Readily divides (mitosis) producing new cells to replace old or damaged cells
- ❖ Lacks blood vessels
- ❖ _____
- ❖ Function:
 - Externally - _____ body from drying out, injury, and bacterial invasion
 - Internally - protects, sweeps up impurities, _____ mucus, _____

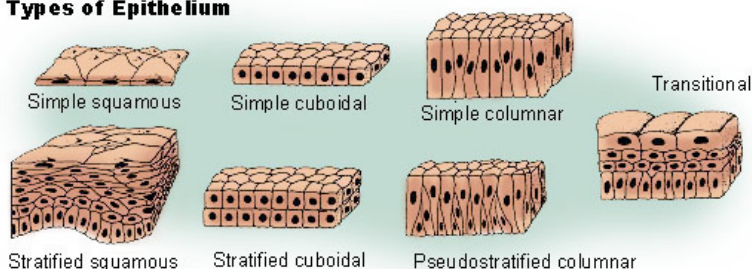


- ❖ Covers _____ and _____
- Has a free surface
- Other surface attached to underlying tissue by the _____

- ❖ _____ Epithelial Tissue - composed of a _____ of cells
- ❖ _____ Epithelial Tissue - composed of _____ of cell



Types of Epithelium

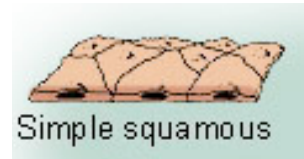


Types of Epithelial Tissues

- 1] _____ Epithelium: simple and stratified
- 2] _____ Epithelium
- 3] _____ Epithelium
- 4] _____ Epithelium
- 5] _____ Epithelium

Squamous Epithelium

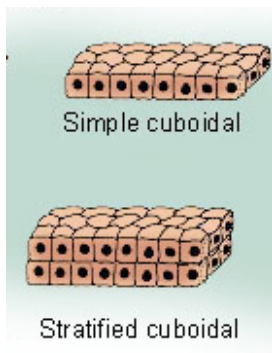
- ❖ 2 types of squamous epithelium:
 - * Simple Squamous Epithelium
 - * Stratified Squamous Epithelium



- ❖ _____ Epithelium
 - _____
 - *Function:* secretion, _____, and filtration
 - *Location:* lines the lungs, blood vessels and heart



- ❖ _____ Epithelium
 - _____
 - *Function:* _____
 - *Location:* outer layer of skin, lining the various orifices of the body



Cuboidal Epithelium

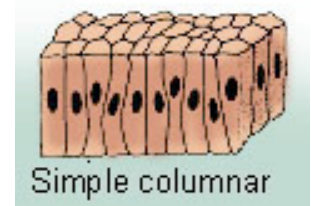
- ❖ _____ Epithelium:
 - _____
 - attached to a basement membrane

- ❖ _____ Epithelium:
 - _____

Location	Function
Glands	
Kidney tubules	

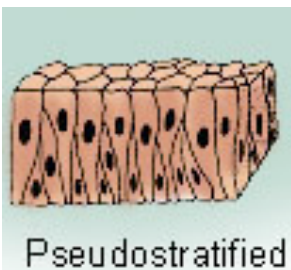
Simple Columnar Epithelium

- ❖ Composed of _____
- ❖ _____ found in the _____ of the cell



Location	Function
Digestive organ	
Uterine tubes	

Pseudostratified Epithelium



- ❖ Cells _____ due to irregularly placed nuclei but each cell touches the _____
- ❖ May contain _____ - aids in _____ of particles
- ❖ *Function:* protection, secretion, movement of mucus and sex cells
- ❖ *Location:* _____ tract, _____ tract

Transitional Epithelium

- ❖ Tissue that _____
- ❖ Found in _____ need to _____
- ❖ *Location:* urinary bladder, ureters, urethra

